



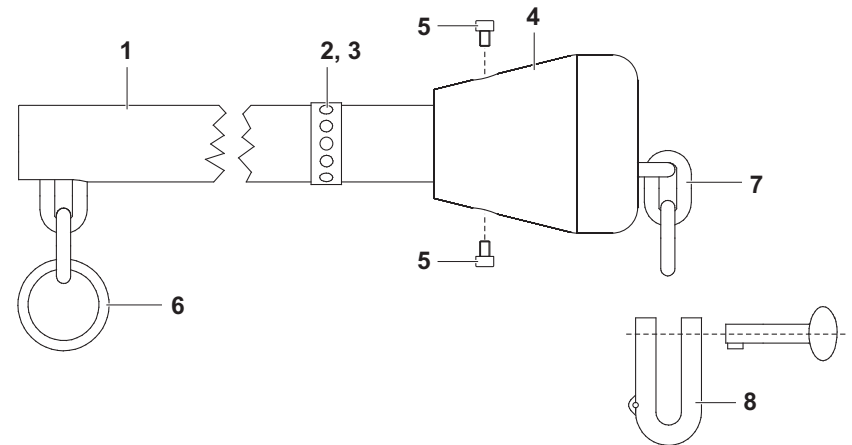
a xylem brand



a xylem brand

Installation Instructions

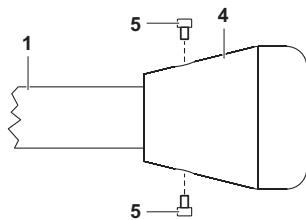
EH/F 170-1,5 EH/F 170-2,5



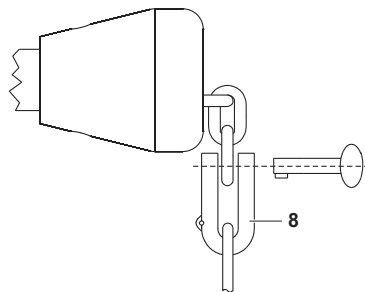
1725 Brannum Lane
Yellow Springs, Ohio 45387 USA
+1 937-767-7241
800-765-4974 (US)
FAX (937) 767-1058
Email: environmental@ysi.com
Internet: www.ysi.com

SensoClean swing mounting assembly

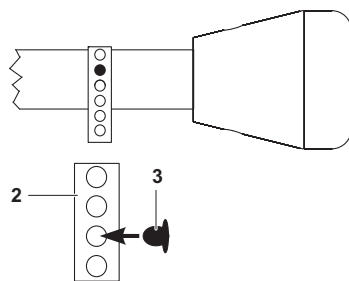
Mounting



- Fasten the chain outlet (4) to the tube (1) using the two hexagon socket screws (5).
Maximum torque: 1 Nm.

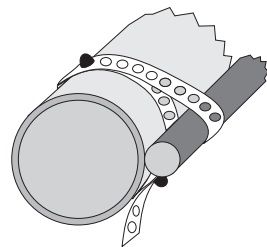


- Put the shackle (8) through the electrode handle.
- Put the shackle lock through the shackle (8) and the last chain link and lock the shackle with half a turn until it catches.



- Put the buttons (3) in the first and sixth hole (depending on cable diameter) of the punched tape (2).
- Put the punched tape around the outrigger and fix it with the first button.
- Place the sensor cable on the outrigger and fix it with the second button.

The cable is fixed on the outrigger.



Technical data

Materials

Pos.	Designation	Material
1	Outrigger	Stainless steel 1.4301 (V2A)
2	Punched tape	Polyamide
3	Button	Polyamide
4	Chain outlet	POM
5	Screw	Stainless steel 1.4301 (V2A)
6	Fixing ring	Stainless steel 1.4301 (V2A)
7	Chain	Polyethylene
8	Shackle	Polyethylene

Application example

